

Environmental concerns,  
but you Get Green  
with Starlab.  
You are passionate  
for science.

REDUCING IMPACT. SAVING PLASTIC.



Passionate for science.



# Reducing **impact.**



## TIPONE & THE CLOSED-LOOP RECYCLING SERVICE

Starlab has been thinking about sustainability for some time, with long-term corporate planning and durable products. We had already succeeded in saving plastic with the redesign of our TipOne® pipette tip system, but we continued our journey to make pipetting more sustainable and in January 2025 we closed the material loop.

Starlab's closed-loop recycling service for TipOne® polypropylene (PP) components, provides several environmental benefits such as reducing waste, reusing resources, and reducing the amount of virgin material we need to source.

During 2024–2025, a total of ~154.3 tonnes of PP regrind was produced from TipOne® plastic returned by our customers across the Starlab Group, providing a total saving of ~104.8 tonnes of CO<sub>2</sub> equivalent.



Since January 2025, recycled material from the labs is being used in the manufacture of TipOne® racks in our facility in Germany. The loop is closed!

<sup>1)</sup> Calculated by REMONDIS using the calculation model developed by the Fraunhofer Institute for Environmental, Safety & Energy Technology (UMSICHT). The process steps of collection, transport, and recycling are considered. Certificates available on request.

<sup>2)</sup> Calculated using average data per tree from: [www.fortomorrow.eu/de/blog/co2-baum](http://www.fortomorrow.eu/de/blog/co2-baum)

### MORE INFO

[starlab.click/recycling-stats](http://starlab.click/recycling-stats)

#### RECYCLING DATA 2024-2025: Groupwide



**~154.3**  
tonnes

The total PP regrind produced from TipOne® plastic returned by Starlab customers groupwide during 2024 & 2025.



**~104.8**  
tonnes<sup>1)</sup>

The total CO<sub>2</sub> equivalent emissions saved across the Starlab Group by the TipOne® recycling program, 2024 & 2025.



**~4355**  
trees<sup>2)</sup>

104.8 tonnes of CO<sub>2</sub> equivalent is the average annual carbon sequestration of ~4,355 trees.

#### RECYCLING DATA 2024-2025: Starlab UK



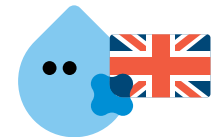
**~97.4**  
tonnes

of PP regrind was produced from TipOne® plastic returned by Starlab customers in the UK during 2024 & 2025.



**~56.6**  
tonnes<sup>1)</sup>

The CO<sub>2</sub> equivalent emissions saved by the Starlab UK TipOne® recycling program during 2024 & 2025.

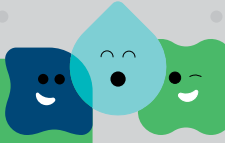


Thank you for being part of the closed-loop. This cannot happen without you! We appreciate your commitment to making science more sustainable.

# Being green, behind the scenes.



**eSHOP**  
Provides paperless ordering processes.



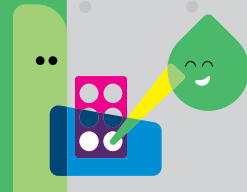
**HYBRID WORKING**  
Reduces the weekly carbon footprint of staff travelling into the office.




**MARKETING**  
Digital first is our mantra! Reduced printed material and increased digital solutions.



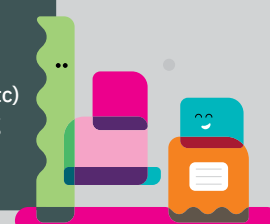
**PRODUCT MANAGEMENT**  
Reviews & streamlines product portfolio. Audits packaging on existing products to reduce where possible. Works with R&D on the development of greener products that result in the use of less raw materials without compromising quality.




**SALES TEAM**  
Promotes TipOne® refills to customers as the plastic-saving and economical alternative to racked tips. Provides free empty racks for refill users. Help customers rationalise product inventory for efficient ordering. Undertakes MGL Green Ambassador Course as part of their training.



**SERVICING LABORATORY**  
Paperless systems with calibration certificates provided in pdf format. Car sharing or use of public transport to on-site clinics where possible.



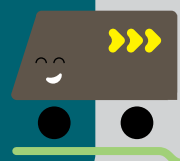
**WAREHOUSE**  
Reuse cardboard boxes where possible. Plastic padding has been replaced with 100% biodegradable paper packing. All waste (cardboard, pallets etc) is recycled. Warehouse lighting replaced with energy-saving lamps.



**PURCHASING**  
Product is purchased for the whole Starlab group to ensure efficient transportation.



**CUSTOMER SERVICE**  
A 100% paperless office might be an unrealistic goal but we are nearly there! We regularly review and audit internal administrative processes and have digitised nearly all processes to reduce paper use to an absolute minimum.



**CARBON OFF-SET DELIVERIES**  
All deliveries of product to customers undertaken by UPS courier service are carbon off-set.

**197.01**  
tonnes CO<sub>2</sub>  
mitigated during 2025, groupwide.

# The TipOne® journey to closing the recycling loop...

## 10 YEARS IN THE MAKING

TipOne® made its debut in 1998 as an innovative pipette tip system aimed at reducing plastic waste with its easy to use refill and reusable racks. Recognising the potential for improvement, a significant redesign took place in 2015 with focus on two key objectives: to minimise overall plastic use while maintaining quality and, to improve recyclability and thus advance efforts towards a closed-loop recycling system.

Starlab formed a partnership with recycling experts REMONDIS in 2021, and in January 2025, with the start of the move of TipOne® manufacturing from the USA to Germany, we were finally able to start using the recycled TipOne® plastic.

**Recycled TipOne® PP from our recycling service is now being used in Germany to make more TipOne® products. The recycling loop is closed!**

### 2015 System redesign:

This was about so much more than just giving TipOne® a makeover. The system was redesigned so less plastic overall was required to make the components, without compromise to quality



The base of TipOne® racks that are made in Germany contain **75% TipOne® recyclate**. The recycling loop is closed!

### Jan-2025: Manufacturing TipOne® in Germany begins.

The collected TipOne® recyclate can now start to be used



**Industry's first research allowance for sustainable recycling!**  
[starlab.click/research-allowance](http://starlab.click/research-allowance)



### Improved recyclability

was also a main focus. All system components now made from polypropylene (PP) and with no paper labels to contaminate the plastic. This means that because high-quality PP only is collected, high-quality PP recyclate is produced. Material quality is a very important step towards being able to close the material loop.

### 2021: TipOne® recycling service in partnership with REMONDIS begins.

The TipOne® plastic returned by our customers is processed by REMONDIS in Germany, but unlike an open-loop recycling system where material is downcycled and sold on for other uses or for other products, ownership of the recyclate remains with Starlab, the quality is maintained and the material kept within the production cycle.



# Why less is more with TipOne®.

## ▶ REDUCE

### USE OF NATURAL RESOURCES

Reusing recycled plastic reduces the need to extract new, raw materials from the earth and protects natural resources.

**100 %**  
RECYCLED  
PLASTIC

The clear, system components (top & bottom shells and spacers) on all refills made in both USA & Germany are made from 100% recycled plastic<sup>1)</sup>.



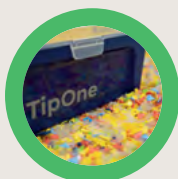
**25 %**  
RECYCLED  
PLASTIC

From July 2024, the base of all TipOne® racks made in USA include 25% recycled plastic<sup>1)</sup>.



**~75 %**  
TipOne® RECYCLED  
PLASTIC

From January 2025, the base and lid of TipOne® racks produced in Germany are made entirely with recycled plastic. The material used for the base includes ~75% post-consumer recyclate collected by our customers using our TipOne® recycling service.



## ▶ REFILL

### TO SAVE PLASTIC USE

**63 %**  
PLASTIC SAVED

when using a sterile refill compared to using the racked equivalent on tip volumes 10 to 300 µl. 53 % plastic saved for tip volumes 1000 and 1250 µl.



**807 g**  
PLASTIC SAVED

when using the 1250 µl refill compared to racked equivalent. (466 g for 10 µl; 546 g for 200/300 µl and 737 g for 1000 µl.) All savings quoted per 960 tips.



## ▶ REUSE

### THE RACKS AGAIN & AGAIN

**100**  
AUTOCLAVE CYCLES

TipOne® racks are designed to be reused. We have tested them; they can withstand at least 100 autoclave cycles (with wafers inserted) without any loss of shape or quality.



## ▶ RECYCLE

### THE FIRST, CLOSED-LOOP RECYCLING SERVICE FOR LABS

**WHAT IS CLOSED-LOOP RECYCLING?** Closed-loop recycling is a sustainable process that allows TipOne® plastic to be recycled and reused for more TipOne® products. One of the benefits of a closed-loop system is that the polypropylene is kept within the production cycle for as long as possible, thus creating a sustainable cycle of material for use—a circular economy—that increasingly reduces the need for new, virgin materials.

**~211.3 t**  
MATERIAL FOR REUSE

By December 2025, a total of ~211.3 tonnes of reground TipOne® plastic had been produced from the TipOne® plastic returned by customers. This means ~211.3 t less virgin PP for us to source which eliminates the associated greenhouse gas (GHG) emissions of raw materials extraction for the same amount. More info: [starlab.click/recycling-stats](https://starlab.click/recycling-stats)



**ZERO**  
OTHER  
MATERIAL

TipOne® system components are made entirely from recyclable polypropylene (PP) and contain no labels or other materials to contaminate the recyclate, and makes the recycling process for users quick and easy.



**SECOND  
LIFE**

Buy your tips by the case, and reuse the case carton to send us your TipOne® polypropylene for recycling. We will recycle the box, as well as the plastic!



**100 %**  
OF YOUR  
RECYCLING  
WILL BE REUSED

Starlab guarantees that 100 % of the TipOne® polypropylene returned will be recycled and reused.



**100 %**  
RECYCLED &  
RECYCLABLE  
CARDBOARD

Pack and case cartons for all TipOne® products are made from recycled and recyclable cardboard.



# The TipOne® closed-loop.



## WHAT HAPPENS TO YOUR RECYCLING

Collect your recycling, and arrange collection

## WHAT CAN BE RECYCLED?

All polypropylene (PP) components of the TipOne® system can be collected for recycling. Please only return clean, non-contaminated TipOne® components, and no tips!

**Rack:** base, lid, coloured tip wafer

**Refill:** top & bottom shells, spacers, coloured tip wafers

**Sterile Refill:** top & bottom shells, coloured tip wafer

**Stack Rack:** base, frame, lid, coloured tip wafers

All plastic TipOne® system components excluding tips, the bag used for loose tips, and the shrink wrap can be returned for recycling.

**Please remove all autoclave tape and labels.**

## EASY TO USE SERVICE

Collect the recycling and go online to organise collections as and when it suits you. A courier will come in and pick it up. It's that easy!

## JOIN US!

The closed-loop recycling service is available to all TipOne® customers located in Austria, France, Germany, Italy and the UK.

**To join, you can sign up here:**

[www.starlab.click/recycling-uk](http://www.starlab.click/recycling-uk)

## How the closed-loop works.

Use TipOne® in your lab.



Your recycling is taken to the recycling company.



And recycled into material that we can reuse



The recycled material is used in our TipOne® factory in Germany.

**NEW RACKS!** TipOne® racks made in Germany are made entirely from recycled plastic. The base of the rack includes 75% recycled TipOne® plastic.



WATCH VIDEO

SEE OUR RECYCLING VIDEO

# The TipOne® recycling process.

## THE STARLAB UK RECYCLING PROCESS



### REGISTER

You must register before you can use the service. Click here:

#### REGISTRATION FORM

or go to: [www.starlab.click/recycling-uk](http://www.starlab.click/recycling-uk)

- Email the completed form to: [recycling@starlab.co.uk](mailto:recycling@starlab.co.uk)  
Your details will be set up on the Recycling Collection Portal
- You will receive an email (within days) with your personal log-in details from [remondis-recycling.de](http://remondis-recycling.de)
- You can now use the service! No other set-up is needed, your details are pre-filled in your account

### 1

#### WHAT CAN I RECYCLE?

TipOne® polypropylene (PP) packaging ONLY!



Tips cannot be recycled.  
Recycling must be contamination free and contain no labelling or autoclave tape.  
TipOne® plastic ONLY please!

### 2

#### COLLECT THE RECYCLING

All TipOne® recycling must be returned in a large, sturdy box

- If you do not already do so, we suggest buying your tips by the case – it's both cheaper and greener!
- You can then reuse the outer, large case box to store and send back your recycling. Now that is clever!



When you have collected a full box, arrange collection.

### 3

#### ARRANGE COLLECTION

Collections are arranged via the:

#### RECYCLING COLLECTION PORTAL

<https://login.remondis-recycling.de/versandlabel>

- Log-in using your personal details
- Click on **Archiv / Shipping** in the left-hand menu
- Click **Create Label** button
- Confirm (tick boxes) that the recycling is contamination free, and agree to the Data Protection Regulations
- **Create and print a separate label for each box or bag being shipped**

### 4

#### WAVE GOODBYE

Prepare the recycling for collection:

- Securely seal the box and its contents
- Affix a courier delivery label to each box being shipped
- Leave the boxes in your designated collection location (this is printed on the courier label)
- Your recycling will be collected by DHL Express, and taken to our recycling partner for processing

### 5

#### REPEAT

Repeat steps 1 to 4

- And continue to Reduce, Reuse, Refill and Recycle—and close the material loop!—with Starlab TipOne®

#### MORE INFO

[starlab.click/recycling-uk](http://starlab.click/recycling-uk)

# Tips for greening your lab.

## REDUCE AND REUSE

When it comes to plastic waste in the lab, it's obviously good to recycle what you can, but two other important considerations are to REDUCE the amount of plastic coming into your lab in the first place, and second, to REUSE whatever you can.

This is where TipOne® comes into its own – when using our refill systems you do both! You reduce the amount of new plastic coming into your lab AND you are reusing TipOne® racks at the same time.

The tables show the amount of plastic saved with every pack of refills compared to pre-racked tips. Calculate how many you tips you get through in a day, a week or a year, to see how much plastic you can save!

## PLASTIC SAVED PER PACK OF REFILLS vs PER PACK OF RACKED TIPS

Tip volume	Per pack (960 tips)
10 µl & 10/20 µl XL	466 g
200 µl	546 g
300 µl	546 g
1000 µl	737 g
1250 µl XL	807 g



## PLASTIC SAVED PER PACK OF STERILE REFILLS vs PER PACK OF STERILE RACKED TIPS

Tip volume	Per pack (960 tips)
10 µl & 10/20 µl XL	370 g
200 µl	370 g
300 µl	370 g
1000 µl	475 g
1250 µl XL	475 g



## BUY IN BULK

Buy by the case (Starlab Article Nos ending with -C). It's greener, cheaper, and saves on both transport emissions and packing materials. If you buy TipOne® tips by the case, you can reuse the outer box to send back your recycling!



## REUSE TIPONE® RACKS FOR MORE THAN JUST TIP REFILLS

Empty TipOne® racks are ideal for the storage of tubes, caps and other small items, to help keep your bench or hood tidy and organised. They can also be used to hold tubes and other small items for autoclaving. The racks can be autoclaved over and over again, and can stack on top of one another to optimise space in your autoclave too!



We can provide certificates of recycling showing how much recycling you have returned. Useful info if your lab is going for lab certification or for use for internal audits. Contact your Account Manager.

# Tips for greening your lab.



## THINK BEFORE YOU AUTOCLAVE!

Many products are already certified and do not require autoclaving—nine times out ten they probably don't even need to be autoclaved. To save on energy and water, only autoclave when necessary and ensure the autoclave is full.



## BE GOOD, CLOSE THE HOOD!

Close the fume hood sash when not in use; this can drastically reduce energy use. Keeping the hood tidy can also save on energy. Storing too much in the hood may block the airflow which means the unit has to work harder and therefore, consume more energy.



## FREEZER MANAGEMENT!

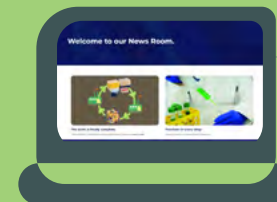
Set ultra low freezers to  $-70^{\circ}\text{C}$  rather than  $-80^{\circ}\text{C}$ ; this won't compromise the sample's integrity (always test run with unimportant samples first!) but will save a lot of energy. Defrost regularly to avoid using more energy when loaded with ice. Discard old samples so freezer space is not wasted, and optimise freezer space with sample storage boxes for efficient energy use.



## DOWNLOAD

[starlab.click/cool-sustainability](http://starlab.click/cool-sustainability)

See our infosheet for more info!



## MORE INFO

[starlab.click/newsroom](http://starlab.click/newsroom)

See our NEWSROOM for more tips and articles on lab sustainability

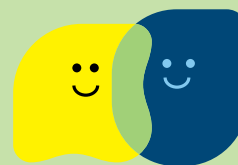


## GOING FOR LEAF?

Find out which Starlab products can help your lab achieve bronze, silver or gold certification.

## DOWNLOAD

[www.starlab.click/leaf](http://www.starlab.click/leaf)



## CREATE A GREEN LAB GROUP

Get together with like-minded people in your lab to identify where improvements can be made. Meet with other labs in your institute to swap and share ideas (and empty TipOne® racks!).

# More than just tips...

## OUR OTHER SUSTAINABLE PRODUCTS



### ErgoOne® PIPETTES

Regular pipette maintenance contributes to the total plastic waste generated by labs. Pipette spares require raw materials, manufacturing and shipping the same as any other product. Many pipettes have a seal and o-ring with the usual recommendation of annual replacement. ErgoOne® pipettes are made for durability. They feature a greased system that protects and reduces friction so the sealing system rarely needs replacing. Fewer parts = less plastic waste. Additionally, the steel tip cone on ErgoOne® micro models helps to reduce the likelihood of breaks and damage often associated with small volume tip cones, further reducing the need for spare parts.



### FREEZER RACKING

Optimise the space in your freezer with freezer racking to cut energy use. Optimising storage space in the freezer decreases the space where air can get in when the door is open, which minimises frost build up. Using racks can provide easier access to your samples which will limit door opening times, so less energy is needed to get back to temperature. Efficiently using the space in your freezer could even reduce the number of freezers your lab needs. Starlab's range of high-quality freezer racking is made in Germany with 85% recycled stainless steel, in a factory powered with 100% sustainable energy. Sustainability has never been so cool!



### StarGuard® GLOVES

Starlab is reducing our use of natural resources and cutting transport emissions with our StarGuard® range of gloves. Gloves are shipped direct from manufacturing to our warehouse, and shipped in containers without pallets to maximise the quantity of gloves per shipment. Comfort and Sensitive gloves are sold in boxes of 250 and 200 gloves respectively. Shipping and storing more gloves in the same size box as the usual 100 gloves, saves both transport emission and packaging materials.



### GuardOne®

GuardOne® workstations were designed with sustainability in mind. Units are flat packed to reduce packaging volume and allow more units to be shipped per pallet. GuardOne® features the latest fan technology and energy-saving LED lighting to provide one of the lowest power consumptions on the market. Long-life consumables (such as the UV lamp) also prevent the cost and waste associated with frequent replacement. Have you ever thought about the cost of a failed PCR? GuardOne® will help protect your samples from cross-contamination and could prevent the time and cost of the extra consumables needed when having to duplicate experiments.



### Chemgene MEDLAB

Chemgene MEDLAB provides effective cleaning and disinfection to a consistently high standard. Chemgene is non-corrosive, chlorine free and contains biodegradable ingredients. Economical dilution rates from 1% and a shelf-life of 3 months for diluted product means the product lasts longer, which helps prevent product waste and also lowers packaging waste. The 5 litre containers are made with 35% recycled plastic and the 1 litre bottles made with 50% recycled plastic; both can be recycled after use too. The Ready-to-Use 1:10 Spray and the 1L empty reusable and refillable spray bottle are made from 100% recycled plastic.



### BATH BEADS

Reduce your water use with thermally efficient bath beads. Bath beads transfer both heat and cold with high efficiency. Bath beads can also be used to replace dry ice.



### 5.0 ml TUBES

Reduce plastic use! 5.0 ml tubes are ideal for those times when 2.0 ml tubes are too small but 15 ml tubes are too big. They can also reduce the amount of space taken up in your freezer so you can store more samples.

[GO TO PRODUCTS](https://www.starlab.click/green-products)

[www.starlab.click/green-products](https://www.starlab.click/green-products)

# The Starlab Green Team.

## THE STARLAB GREEN TEAM

The Green Team comprises members across the Starlab Group. Green Team members are passionate about sustainability and green issues; their role is to research, identify and share ideas for sustainability and improvement, in terms of our products and our internal processes, and to galvanise sustainability initiatives with colleagues, customers or the wider community.

If you would like to discuss ways of making your lab greener, or you have a suggestion on how we can help you to reach your own sustainability goals, please let us know. Starlab loves to take a consultative approach, and Green Team members or the Starlab Green Officer can meet with individuals or sustainability groups to discuss ideas, hear suggestions and see how we can help you.

Please contact your Account Manager or a member of the Green Team.

**Together, we can build a greener future in the lab!**



● **STARLAB LOCATIONS:**  
France, Italy, United Kingdom,  
Switzerland & Germany.

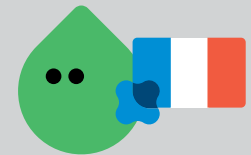
## GREEN TEAM



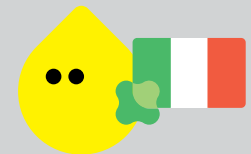
Florian.Linz@starlab.de  
Stefan.Stutz@starlab.de



Francis.Parker@starlab.co.uk  
Mandy.Hutson@starlab.co.uk  
Vanessa.Whight@starlab.co.uk



Antoine.Escourrou@starlab.fr  
Olivier.Zuriguel@starlab.fr



Alessandro.Ferrarini@starlab.it  
Silvia.Angelucci@starlab.it

# Environmental concerns, but you Get Green with Starlab. You are passionate for science.

It is important to focus on what drives us: passion.

Our message “You are passionate for science” highlights the passion in our commitment to science. Starlab supports scientists by nurturing their passion. We believe that a combination of scientific excellence and environmental awareness enables us to find solutions to the challenges of tomorrow.

Passionate for science.

Passionate for sustainability in science.



T: +44 (0)1908 283800  
infoline@starlab.co.uk  
[www.starlab.co.uk](http://www.starlab.co.uk)

Passionate for science.

