

Get green with Starlab.

PASSIONATE FOR SUSTAINABILITY IN SCIENCE.



Passionate for science.

 starlab

25
YEARS

A company with a mission.

OUR GREEN MISSION

When you take one step forward in the lab, you should not have to take two steps back where environmental protection is concerned. Only when scientific progress is also sustainable, will it unfold long-term benefits for all of us in terms of climate issues.

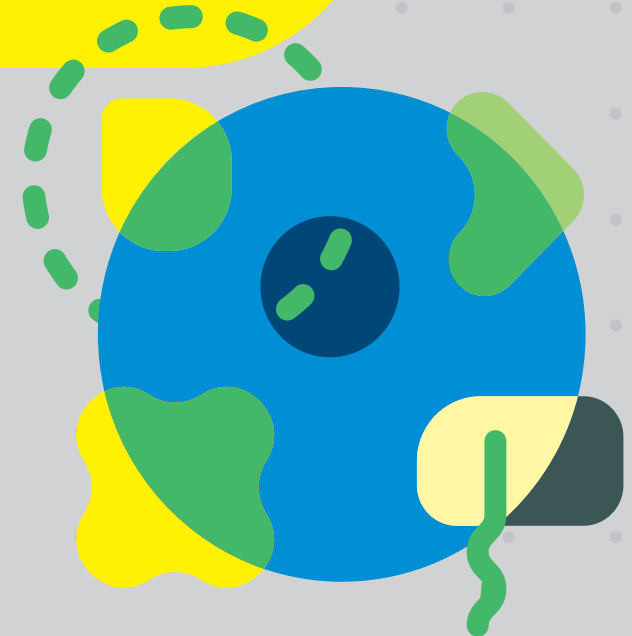
That is why we at Starlab have been thinking about sustainability for some time, with long-term corporate planning and durable products. We have already succeeded in saving plastic with our TipOne® pipette tip system. However, the truth is that we all still have a long way to go towards a fully sustainable laboratory.

For you and for our planet, our mission is to continually look for intelligent, climate-friendly products and processes. Together with you, we will strive to achieve our goal of becoming a thoroughly green company. Our promise along the way: to continue to take steps wherever we can – whether large or small – to reduce our impact on the environment.

Sustainability is at the heart our business culture, and we hope this will help us attract the best talent. Through this mission, Starlab will incentivise and reward ecologically sustainable behaviour in everyday business tasks, and we will actively support our employees' engagement with sustainability initiatives in the local or wider communities.

“We need to take responsibility. It requires self-reflection, engagement and the will to make a change for a sustainable future. In our business we need to constantly look for and provide better solutions that direct us to take the next step for being a role model in our industry.”

Klaus Ambos
CEO Starlab International




Being green, behind the scenes.



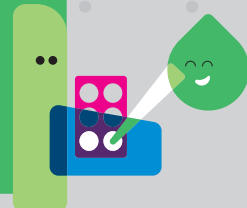
eSHOP
Provides paperless ordering processes.

MARKETING
Digital first is our mantra!
Reduced printed material and increased digital solutions.




PRODUCT MANAGEMENT
Reviews & streamlines product portfolio.
Audits packaging on existing products to reduce where possible. Works with R&D on the development of greener products that result in the use of less raw materials without compromising quality.

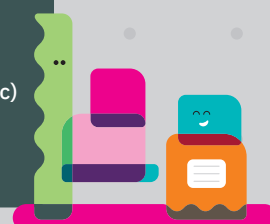
SALES TEAM
Promotes TipOne® refills to customers as the plastic-saving and economical alternative to racked tips. Provides free empty racks for refill users. Help customers rationalise product inventory for efficient ordering. Undertakes MGL Green Ambassador Course as part of their training.




SERVICING LABORATORY
Paperless systems with calibration certificates provided in pdf format. Car sharing or use of public transport to on-site clinics where possible. Reusable mailing boxes provided for sending your pipettes to our labs for servicing.



WAREHOUSE
Reuse cardboard boxes where possible. Plastic padding has been replaced with 100% biodegradable paper packing. All waste (cardboard, pallets etc) is recycled. Warehouse lighting replaced with energy-saving lamps.



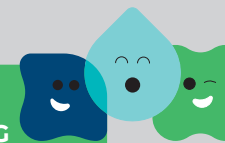
PURCHASING
Product is purchased for the whole Starlab group to ensure efficient transportation.



CUSTOMER SERVICE
A 100% paperless office might be an unrealistic goal but we regularly review and audit our internal administrative processes and have digitised nearly all processes to reduce paper printing to an absolute minimum.



HYBRID WORKING
Reduces the weekly carbon footprint of staff travelling into the office.



The TipOne[®] pipette tip system is evolving...

SAVING PLASTIC SINCE 1998

TipOne[®] was designed to be a plastic saving pipette tip system. The system is reusable, refillable and recyclable, with every part of the system being interchangeable with the rest. It was the first tip system on the market that provided an easy to use refill system.

The system was redesigned in 2015 with two main aims: to update its look, and to save more plastic. Through our expertise in manufacturing, the new system now takes less plastic to manufacture, without compromise to its quality. Compared to the original system, up to 59 % less plastic (by weight, per pack), is required to make the clear refill shells, and a 6 % reduction of plastic achieved per rack. The introduction of a new, sterile refill system provides a saving of up to 63 % less plastic (per pack) compared to the equivalent, racked product.

On top of all that, as the next step in our journey to make pipette tips more sustainable, we are now manufacturing the clear plastic packaging components of our refill systems from 100% recycled plastic.

#EcolutionMovement



BAG
Made from recyclable LDPE



CLEAR WRAP
Wrap on the refills is made from recyclable LDPE



STACK RACK
The clear layers and lid, the blue base and the coloured tip wafers, are all made of recyclable Polypropylene (PP)



REFILL
The clear bottom trays and lid, and the coloured tip wafers, are all made of recyclable Polypropylene (PP)



RACK
The rack base and lid, and the coloured tip wafer, are all made of recyclable Polypropylene (PP)



STERILE REFILL
The clear bottom shell and lid, and the coloured tip wafer, are all made of recyclable Polypropylene (PP)



The lids, spacers and bases of our refills are now made from **100% RECYCLED PLASTIC**

Look out for the labels on the lines already converted.

REDUCE AND REUSE!

When it comes to plastic waste in the lab, it's obviously good to recycle what you can, but two other important considerations are to REDUCE the amount of plastic coming into your lab in the first place, and second, to REUSE whatever you can.

This is where TipOne® comes into its own – when using our refill systems, you do both! You reduce the amount of new plastic coming into your lab AND you are reusing TipOne® racks at the same time. Here's the amount of plastic saved with every pack of refills compared to pre-racked tips:

PLASTIC SAVED PER PACK OF REFILLS vs PER PACK OF RACKED TIPS

| Tip volume | Per pack (960 tips) |
|---------------------|---------------------|
| 10 µl & 10/20 µl XL | 466 g |
| 200 µl | 546 g |
| 300 µl | 546 g |
| 1000 µl | 737 g |
| 1250 µl XL | 807 g |

PLASTIC SAVED PER PACK OF STERILE REFILLS vs PER PACK OF STERILE RACKED TIPS

| Tip volume | Per pack (960 tips) |
|---------------------|---------------------|
| 10 µl & 10/20 µl XL | 370 g |
| 200 µl | 370 g |
| 300 µl | 370 g |
| 1000 µl | 475 g |
| 1250 µl XL | 475 g |

TipOne® IS A CONVINCING, SUSTAINABLE PIPETTE TIP SYSTEM

100%



GREEN ENERGY

TipOne® is manufactured in a factory powered entirely by wind.

UP TO 40%



PIPETTE TIPS

Our newest generation of TipOne® tips save up to 40% plastic compared to their equivalent previous version.

100%



CARDBOARD BOXES

Pack and case cartons for TipOne® are made from 100% recycled cardboard.

100



AUTOCLAVE CYCLES

TipOne® racks are designed to be reused. We have tested them; they can withstand at least 100 autoclave cycles (with wafers inserted) without any loss of shape or quality.

100%



RECYCLED PLASTIC

The clear plastic packaging on the refills (bases, lids and spacers) are now being manufactured from 100% recycled plastic. Look out for the labels on the lines already converted!

UP TO 63%



PLASTIC SAVED

when using a sterile refill compared to using the racked equivalent.

ZERO



OTHER MATERIAL

TipOne® racks, refills and stack racks are made entirely from recyclable polypropylene (PP) and contain no paper labels, so recycling is quick and easy.

66%



SPACE SAVING

The 1000 µl TipOne® refill redesign provided a 66% space saving compared to the original, which saves both packaging and transportation resources.

UN LIMITED

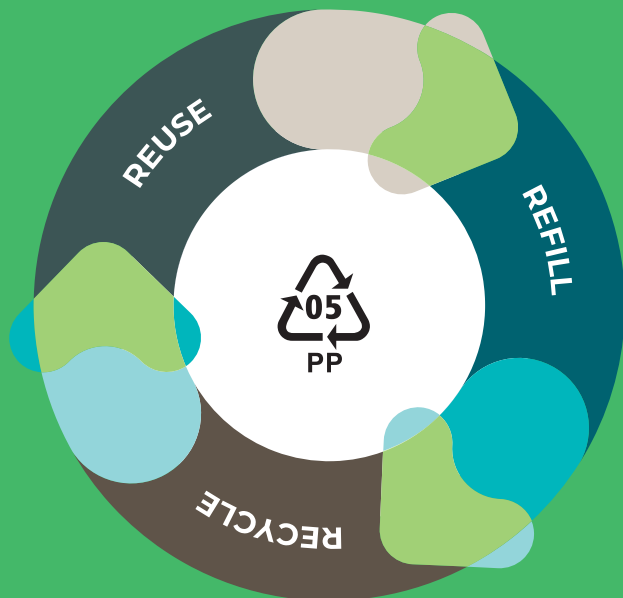


UPCYCLING OPTIONS

Reuse your TipOne® racks for whatever creative storage solution you can come up with!

TipOne® recycling collections.

TipOne® IS THE ORIGINAL REUSABLE, REFILLABLE AND RECYCLABLE TIP SYSTEM



REUSE

TipOne® racks are designed for reuse with the refill systems. Our durable racks (with tip wafers inserted) can withstand at least 100 autoclave cycles without loss of shape or strength.

REDUCE

Save empty TipOne® racks to reuse with the refills. Aim to reuse the racks as many times possible. Why not liaise with other people in your lab or building, and set up a pool of empty racks for sharing to ensure even less waste.

REFILL

TipOne® refills are an economical alternative to pre-racked tips. They save on plastic waste, are quick and easy to use, and do not compromise the tip's cleanliness when racking up.

RECYCLE

All your polypropylene (PP) TipOne® packaging: the racks, the coloured tip wafers, the clear refill bottom shells and lids, and the Stack Rack outer layers and the lid, can be recycled.



THE NEW STARLAB FRANCE RECYCLING COLLECTION SERVICE

The TipOne® recycling collection service is available to all TipOne® customers in France. It's easy to use, and you can organise the regularity of collections to suit your needs.

For more information go to www.starlab.click/recycling-fr

The TipOne® recycling process.

THE NEW PROCESS FOR STARLAB FRANCE



REGISTER

You must register before you can use the service. Click here:

REGISTRATION FORM

or go to: www.starlab.click/recycling-uk

- Email the completed form to: recycling@starlab.fr
Your details will be set up on the Recycling Collection Portal
- An email with your personal log-in details will be sent from remondis-recycling.de in a few days
- You can now use the service! No other set-up is needed, your details are pre-filled in your account

1

WHAT CAN I RECYCLE?

TipOne® polypropylene (PP) packaging ONLY!



Tips cannot be recycled.
Recycling must be contamination free.
TipOne® plastic ONLY please!

2

COLLECT THE RECYCLING

All TipOne® recycling must be returned in a large, sturdy box

- If you do not already, we suggest buying your tips by the case - it's both cheaper and greener!
- You can then reuse the outer, large case box to store and recycling. Clever eh?



When you have collected a full box, arrange collection.

3

ARRANGE COLLECTION

Collections are arranged via the:

RECYCLING COLLECTION PORTAL

<https://login.remondis-recycling.de/versandlabel>

- Log-in using your personal details
- Click on **Archiv / Shipping** in the left-hand menu
- Click **Create Label** button
- Confirm (tick boxes) that the recycling is contamination free, and agree to the Data Protection Regulations
- **Create and print a separate label for each box or bag being shipped**

4

WAVE GOODBYE

Prepare the recycling for collection:

- Securely seal the box and its contents
- Affix a courier delivery label to each box being shipped
- Leave the boxes in your designated collection location (this is printed on the courier label)
- Your recycling will be collected by DHL Express, and taken to our recycling partner for processing

5

REPEAT

Repeat steps 1 to 4

- And continue to Reduce, Reuse, Refill and Recycle with Starlab TipOne®

MORE INFO

www.starlab.click/recycling-fr

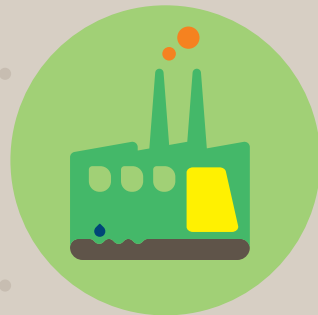
What happens to my recycling?



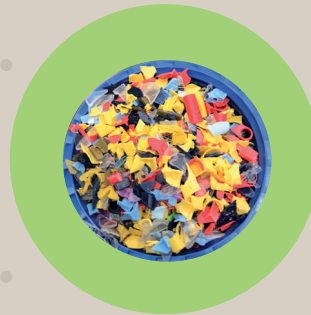
WATCH VIDEO



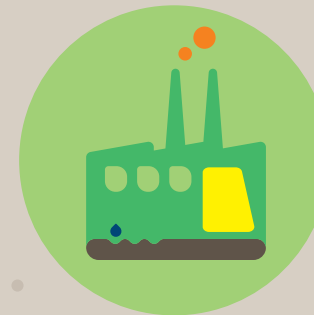
You collect your TipOne® polypropylene (PP) packaging for recycling, and arrange a collection



The recycling is taken to the recycling company



The first step in the recycling process is the crushing of the TipOne® plastic. The shredded material is then processed into plastic granulate



The plastic granulate is then processed further



**New,
high quality
plastic
product**

And made into new plastic products

Tips on **greening** your lab.



REUSE TipOne® RACKS FOR MORE THAN JUST TIP REFILLS

You can reuse empty TipOne® racks to store tubes, caps and other small items to keep your bench or hood tidy and organised. The hinged lid and how the racks stack one on top of the other makes the racks ideal storage boxes.

THINK BEFORE YOU AUTOCLAVE!

Many products are certified. Nine times out ten they probably don't need to be autoclaved.

Think of the energy you can save.



FREEZER MANAGEMENT!

Set ultra low freezers to -70°C rather than -80°C ; this won't compromise the sample's integrity (always test run with unimportant samples first!) but will save a lot of energy. Buy efficient freezers when replacing old freezers. Defrost regularly to avoid using more energy when loaded with ice. Discard old samples so freezer space is not wasted, and optimise freezer space with sample storage boxes for efficient energy use.

BUY IN BULK!

Buy by the case (Starlab Article Nos ending with -C). It's greener, cheaper, and saves both transport emissions and packing materials.



SWITCH IT OFF!

Equipment not being used should be switched off. Even on standby, equipment can significantly increase the energy used.

CLOSE IT!

Close the fume hood sash when not in use. Even for fixed flow hoods, this can reduce the amount of heated or cooled air escaping the room.

MORE INFO

www.starlab.click/newsroom

See our **NEWSROOM** for more tips on greening your lab and a range of articles on sustainability.

Our greenest products.

REDUCE



TipOne® refills.

Refills significantly reduce single-use plastic waste. Ensures the reuse of tip racks. Space-saving which reduces packaging needs and transport emissions. Lids, spacers and base trays made with 100% recycled plastic.



ErgoOne® Pipettes.

Greased system reduces the waste and cost associated with annual seal and o-ring replacement. Stainless steel tip cone on micro models prevents breakage and further part needs.



StarGuard® Gloves.

Comfort & Sensitive packed in boxes of 250 & 200 gloves respectively. Up to 40% more gloves in the same size boxes as 100 gloves to reduce packaging needs and transport emissions.



GuardOne® Workstations.

Minimal packing volume & weight reduces transport needs. Latest fan technology and energy-saving LED light provides one of the lowest power consumptions on the market. Long-life UV lamp.



Freezer racking.

Optimise the space in your freezer with freezer racking to cut energy use. Our racks are made with 85% recycled stainless steel.



5.0 ml tubes.

When 2.0 ml tubes are too small but 15 ml tubes are too big. Reduce plastic use and amount of space used in the freezer with 5.0 ml tubes.

GO TO PRODUCTS

www.starlab.click/green-products

REUSE



TipOne® Racks.

Reuse with the refill systems over and over again. The sturdy racks can withstand at least 100 autoclave cycles. Great storing small lab items too!



Pipette Servicing Mailing Boxes.

Reuse again and again to mail-in your pipettes for servicing. Reduces waste.

RECYCLE



Centrifuge Tubes.

Racked tubes in recyclable cardboard trays. No more hard to recycle polystyrene!



TipOne® system.

Made from recyclable PP (polypropylene), recycle all your TipOne® plastic (excluding tips).

The Starlab green team.

THE STARLAB GREEN TEAM

The Green Team consists of members from each country within the Starlab Group. Green Team members are passionate about sustainability and green issues; their role is to research, identify, share and galvanise ideas for improving Starlab's sustainability ratings, be that for both our products, our internal processes or initiatives with the local or wider communities.

If you would like to discuss ways of making your lab greener, or have a suggestion on how we can improve or help you reach your own sustainable goals, please let us know. We are always happy to talk "all things sustainability", and are open to ideas and suggestions or ways in which Starlab could partner with you so together, we can build a greener future in the lab.

Please contact your Account Manager, or a Green Team member in your country. Alternatively, you can contact the **Starlab Green Officer** at: vanessa.whight@starlab.de

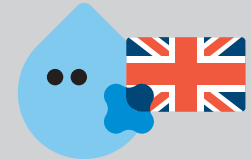


● **STARLAB LOCATIONS:**
France, Italy, United Kingdom
and Germany.

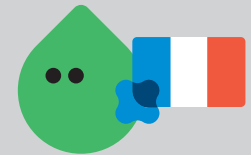
GREEN TEAM CONTACTS



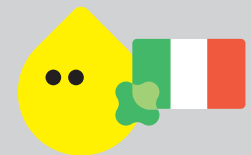
Florian.Linz@starlab.de
Franziska.Baldauf@starlab.de
Stefan.Stutz@starlab.de



Francis.Parker@starlab.co.uk
Mandy.Hutson@starlab.co.uk
Rae.Stephenson@starlab.co.uk



Olivier.Zuriguel@starlab.fr



Alessandro.Ferrarini@starlab.it
Silvia.Angelucci@starlab.it

Celebrating 25 years of TipOne® Pipette Tips.

Your key to quality, reliability and sustainability!

For 25 years, TipOne® Pipette Tips have been the unwavering choice for laboratories worldwide. Our commitment to **quality, reliability and sustainability** has made us the trusted partner of scientists and researchers who demand excellence. Our tips fit onto all popular pipettes, ensuring seamless compatibility and ease of use for all pipettes in your lab. But it's not just about **convenience** – it's also about **making a difference**.

We've consistently delivered on our promise of quality and reliability, empowering you to focus on what truly matters – your research. And in doing so, we've also contributed to a more sustainable future by significantly reducing plastic waste. And that journey continues. **The clear plastic packaging on our refills is now being manufactured with 100% recycled plastic.** Look out for the new labels on the lines already converted.

TipOne® Pipette Tips are more than 'just' tips. They are your partners in scientific discovery and your contribution to **making science more sustainable.** Join us in celebrating 25 years of quality, reliability and sustainability with TipOne® Pipette Tips.



REUSE. REFILL. RECYCLE.

 starlab.click/tipone

Starlab International GmbH
Neuer Höltigbaum 38
22143 Hamburg
Germany

T: +49 (0)40 675 99 39 0
F: +49 (0)40 675 99 39 20
info@starlab.de
www.starlabgroup.com

Starlab GmbH
Neuer Höltigbaum 38
22143 Hamburg
Germany

T: +49 (0)40 675 99 39 0
F: +49 (0)40 675 99 39 20
info@starlab.de
www.starlab.de

Starlab (UK), Ltd
5 Tanners Drive
Milton Keynes MK14 5BU
United Kingdom

T: +44 (0)1908 283800
info@starlab.co.uk
www.starlab.co.uk

Starlab FRANCE SARL
30 Rue Jean Rostand
91400 Orsay
France

T: +33 (0)1 60 13 71 70
F: +33 (0)1 69 41 48 65
info@starlab.fr
www.starlab.fr

Starlab S.r.l.
Via Bracco 6
20159 Milano
Italy

T: +39 (0)2 7020 1040
info@starlab.it
www.starlab.it

 **starlab**

25
YEARS